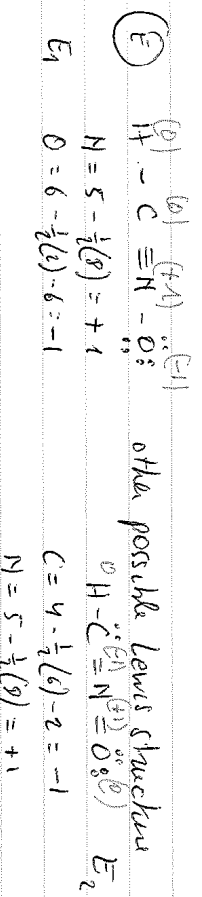
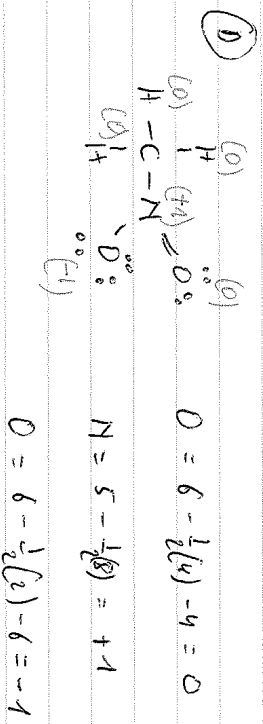
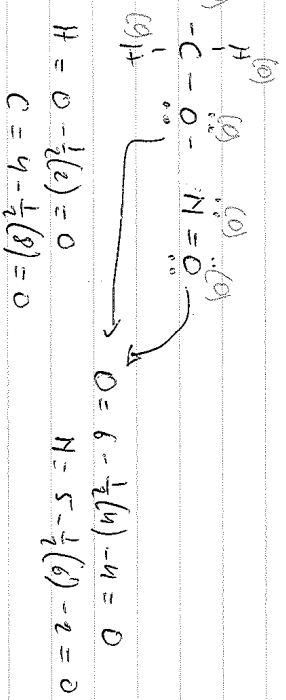
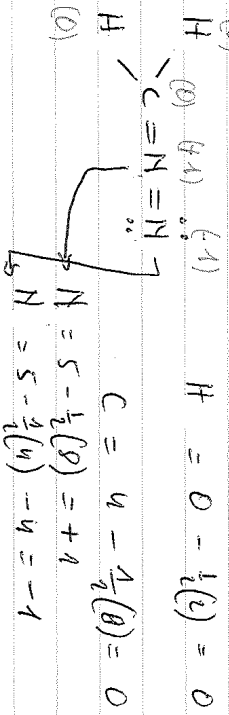


Formal charge : example! (see link on Chemispydubwicz)



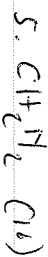
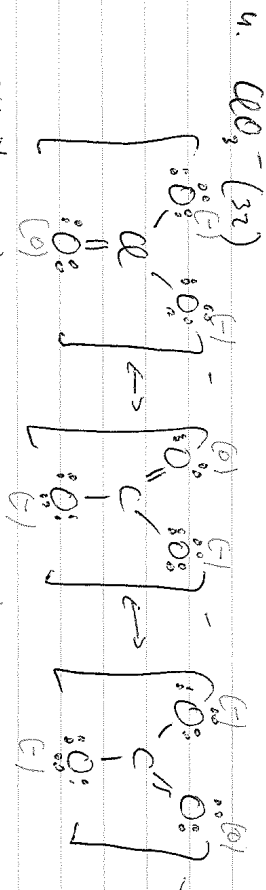
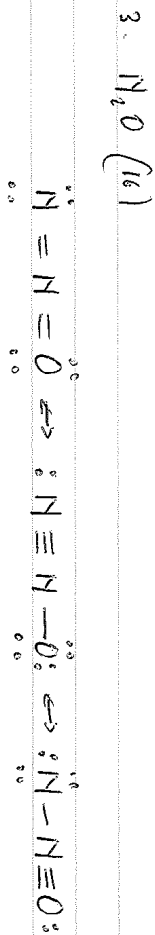
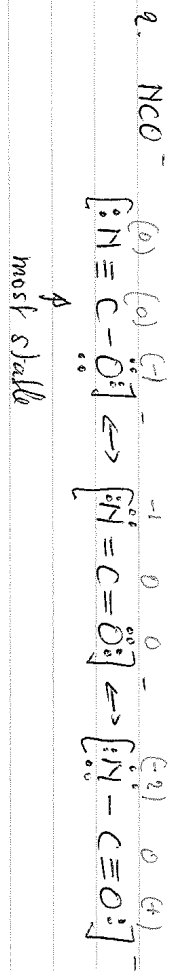
$E_1$  = more stable as  $(-1)$  is on most electronegative element



Assigns lone pair formal charge



↳ most stable as O has negative formal charge



$C = 4 - \frac{1}{2}(8) = 0$   $C = 4 - \frac{1}{2}(6) - 2 = -1$

$N = 5 - \frac{1}{2}(8) = +1$   $N = 5 - \frac{1}{2}(6) - 4 = 0$

$= -1$   $N = 5 - \frac{1}{2}(8) = +1$

↳ most preferred